



sunflower cottage
crochet



Bunny Wall Hanging

A Sunflower Cottage Crochet Pattern

www.sunflowercottagecrochet.com

#SunflowerCottageCrochet

©This pattern and its images are copyright protected and the sole property of Helen Wilkinson of Sunflower Cottage Crochet. Please do not redistribute, transfer, or sell the pattern, or alter it to claim as your own. You may sell any products you create from this pattern. Please credit me by linking online listings [Facebook](#), [Website](#), and tag us on Instagram--[@sunflower.cottage.crochet.too](#)



Materials

- #4 weight yarn – I used 50 yards of Paintbox Simply Aran Cotton in both yellow and grey.
- 5mm hook
- Scissors
- Tapestry needle
- Dowl – I used a 6mm dowl cut to 9” in length

Gauge

My gauge was 11 sts and 9 rows in 2”

Sizing

Blocked your bunny panel will measure approx. 7.5” wide by 9.5” tall if you meet my gauge and use the same size yarn and hook.

Abbreviations

- Ch(s) - chain(s)
- St(s) - stitch(es)
- CA – colour A
- CB – Colour B
- FO – fasten off
- Sk – skip
- Rep – repeat
- Ss – Slip stitch(es)
- YU – yarn under

Written in US terms

Pattern Notes

I started each row with a Chain 1 which **does not** count as a stitch.

The wall hanging is worked from the bottom up using tapestry crochet techniques (single crochet)

I strongly suggest you yarn under instead of yarn over for this one – it will reduce the size of the gaps between your stitches.

To change colour I recommend changing your yarn on the last pull through of the previous stitch.

You can carry your yarn if you wish or use bobbins for this one. I chose to use bobbins for the grey but carried the yellow yarn throughout.



Links

Blog	www.sunflowercottagecrochet.com
Facebook Group	Sunflower Cottage Crochet Community
Ravelry	https://www.ravelry.com/people/SunflowerCCBiz
Lovecrafts	https://www.lovecrafts.com/en-us/user/Sunflower-Cottage-Crochet
Etsy	https://www.etsy.com/uk/shop/SunflowerCottageCr
Instagram	https://www.instagram.com/sunflower.cottage.crochet.too
Email	helenw@sunflowercottagecrochet.com

Video Tutorials:

Yarn under:

I have quick video tutorials for how to do this if you are new to it.

Right handed video tutorial - <https://youtu.be/AcyWP2g9PH0>

Left handed video tutorial - <https://youtu.be/b7IYTUQ6ptI>

Changing colours and carrying yarn:

Right handed video tutorial - <https://youtu.be/qLNNGmRiP2M>

Left handed video tutorial - <https://youtu.be/ivqiR0CQO5I>

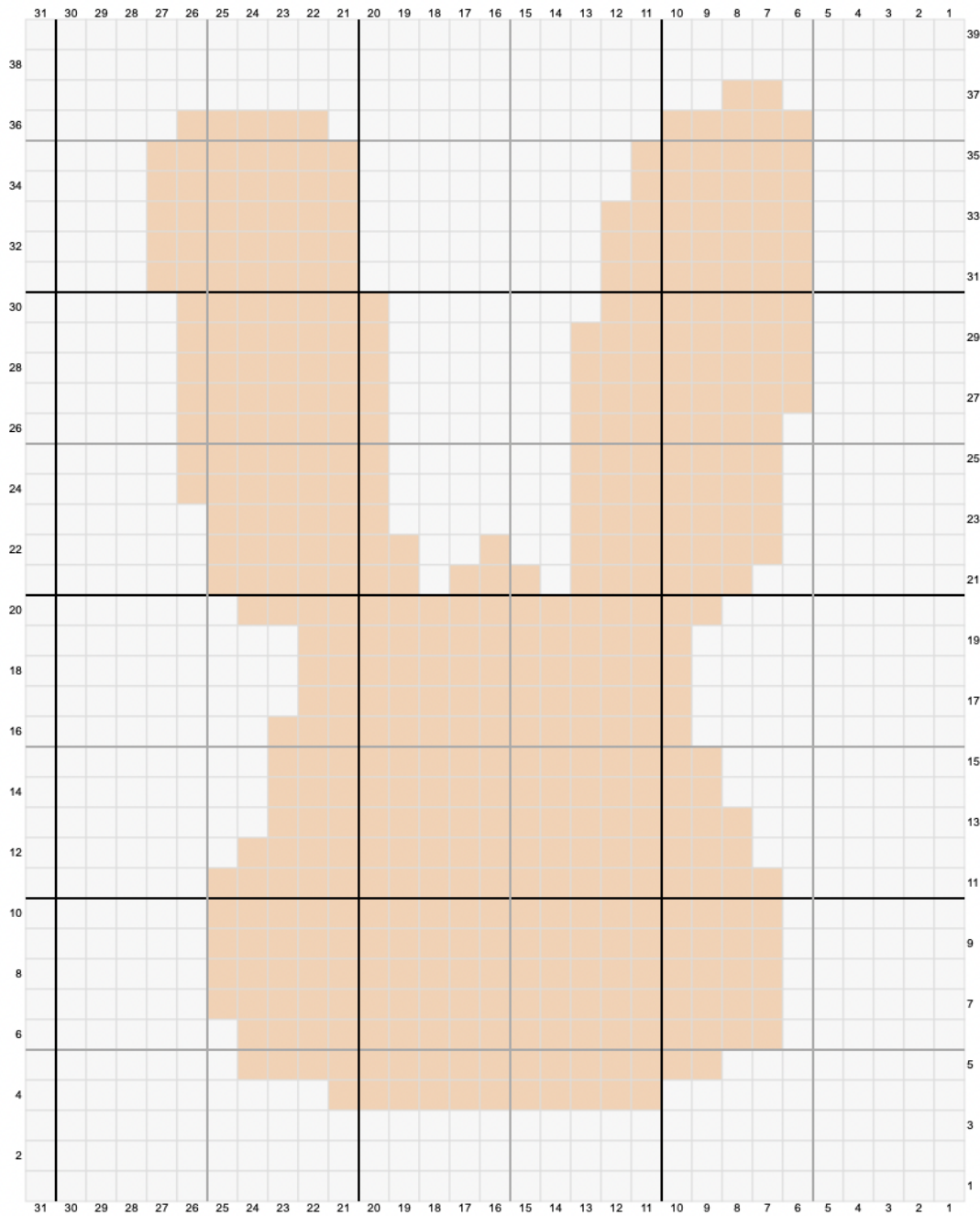
Attaching a dowl:

Right handed video tutorial - <https://youtu.be/UWNahHENBUM>

Left handed video tutorial - <https://youtu.be/5JkVmqt8E6o>



Pattern





Colour A (CA) – background – 712 stitches

Colour B (CB) – Bunny – 497 stitches

Written instructions

Note: if you prefer colour block instructions for this part these are below.

← **Row 1 [RS]:** Turn, ch 1, (CA) x 31

→ **Row 2 [WS]:** Turn, ch 1 (CA) x 31

← **Row 3 [RS]:** Turn, ch 1 (CA) x 31

→ **Row 4 [WS]:** Turn, ch 1 (CA) x 10, (CB) x 11, (CA) x 10

← **Row 5 [RS]:** Turn, ch 1 (CA) x 8, (CB) x 16, (CA) x 7

→ **Row 6 [WS]:** Turn, ch 1 (CA) x 7, (CB) x 18, (CA) x 6

← **Row 7 [RS]:** Turn, ch 1 (CA) x 6, (CB) x 19, (CA) x 6

→ **Row 8 [WS]:** Turn, ch 1 (CA) x 6, (CB) x 19, (CA) x 6

← **Row 9 [RS]:** Turn, ch 1 (CA) x 6, (CB) x 19, (CA) x 6

→ **Row 10 [WS]:** Turn, ch 1 (CA) x 6, (CB) x 19, (CA) x 6

← **Row 11 [RS]:** Turn, ch 1 (CA) x 6, (CB) x 19, (CA) x 6

→ **Row 12 [WS]:** Turn, ch 1 (CA) x 7, (CB) x 17, (CA) x 7

← **Row 13 [RS]:** Turn, ch 1 (CA) x 7, (CB) x 16, (CA) x 8

→ **Row 14 [WS]:** Turn, ch 1 (CA) x 8, (CB) x 15, (CA) x 8

← **Row 15 [RS]:** Turn, ch 1 (CA) x 8, (CB) x 15, (CA) x 8

→ **Row 16 [WS]:** Turn, ch 1 (CA) x 8, (CB) x 14, (CA) x 9

← **Row 17 [RS]:** Turn, ch 1 (CA) x 9, (CB) x 13, (CA) x 9

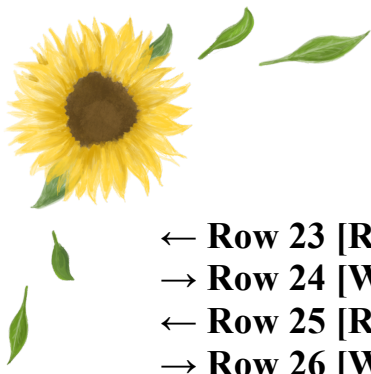
→ **Row 18 [WS]:** Turn, ch 1 (CA) x 9, (CB) x 13, (CA) x 9

← **Row 19 [RS]:** Turn, ch 1 (CA) x 9, (CB) x 13, (CA) x 9

→ **Row 20 [WS]:** Turn, ch 1 (CA) x 7, (CB) x 16, (CA) x 8

← **Row 21 [RS]:** Turn, ch 1 (CA) x 7, (CB) x 6, (CA) x 1, (CB) x 3, (CA) x 1, (CB) x 7, (CA) x 6

→ **Row 22 [WS]:** Turn, ch 1 (CA) x 6, (CB) x 7, (CA) x 2, (CB) x 1, (CA) x 2, (CB) x 7, (CA) x 6



← **Row 23 [RS]:** Turn, ch 1 (CA) x 6, (CB) x 7, (CA) x 6, (CB) x 6, (CA) x 6
→ **Row 24 [WS]:** Turn, ch 1 (CA) x 5, (CB) x 7, (CA) x 6, (CB) x 7, (CA) x 6
← **Row 25 [RS]:** Turn, ch 1 (CA) x 6, (CB) x 7, (CA) x 6, (CB) x 7, (CA) x 5
→ **Row 26 [WS]:** Turn, ch 1 (CA) x 5, (CB) x 7, (CA) x 6, (CB) x 7, (CA) x 6

← **Row 27 [RS]:** Turn, ch 1 (CA) x 5, (CB) x 8, (CA) x 6, (CB) x 7, (CA) x 5
→ **Row 28 [WS]:** Turn, ch 1 (CA) x 5, (CB) x 7, (CA) x 6, (CB) x 8, (CA) x 5
← **Row 29 [RS]:** Turn, ch 1 (CA) x 5, (CB) x 8, (CA) x 6, (CB) x 7, (CA) x 5
→ **Row 30 [WS]:** Turn, ch 1 (CA) x 5, (CB) x 7, (CA) x 7, (CB) x 7, (CA) x 5
← **Row 31 [RS]:** Turn, ch 1 (CA) x 5, (CB) x 7, (CA) x 8, (CB) x 7, (CA) x 4

→ **Row 32 [WS]:** Turn, ch 1 (CA) x 4, (CB) x 7, (CA) x 8, (CB) x 7, (CA) x 5
← **Row 33 [RS]:** Turn, ch 1 (CA) x 5, (CB) x 7, (CA) x 8, (CB) x 7, (CA) x 4
→ **Row 34 [WS]:** Turn, ch 1 (CA) x 4, (CB) x 7, (CA) x 9, (CB) x 6, (CA) x 5
← **Row 35 [RS]:** Turn, ch 1 (CA) x 5, (CB) x 6, (CA) x 9, (CB) x 7, (CA) x 4
→ **Row 36 [WS]:** Turn, ch 1 (CA) x 5, (CB) x 5, (CA) x 11, (CB) x 5, (CA) x 5
← **Row 37 [RS]:** Turn, ch 1 (CA) x 6, (CB) x 2, (CA) x 23
→ **Row 38 [WS]:** Turn, ch 1 (CA) x 31
← **Row 39 [RS]:** Turn, ch 1 (CA) x 31

Do not FO

Edging:

For this we will be working in rounds and continuing to yarn under in our sc stitches!

In CA:

Turn, Ch1, sc in each st across until you reach the final stitch of the row.
(Sc, ch 1, sc) all in that last stitch.

Turn your work 90 degrees so that you are working down the side.

Work 1 sc in the end of each row until you reach the final row.

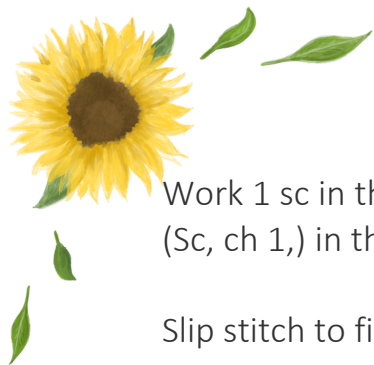
(Sc, ch 1, sc) all in that last stitch.

Turn your work 90 degrees so that you are working along the bottom of your wall hanging.

Work 1 sc in the end of each row until you reach the final stitch.

(Sc, ch 1, sc) all in that last stitch.

Turn your work 90 degrees so that you are working up the side.



Work 1 sc in the end of each row until you reach the final row.
(Sc, ch 1,) in that last stitch.

Slip stitch to first st to join

FO and attach CB

Repeating the instructions for CA work 2 rounds in CB.

Do not FO

Hanging:

There are 2 options here.

Option 1: Chain 40, skip all of the stitches in the row and slip stitch to the last stitch of the row

OR

Option 2:

Single crochet over a length of 6mm dowl cut to approx. 2" longer than your wall hanging.

I have a video on how to do this listed under the video tutorial section above.



Colour Block Instructions for the chart section:

Note: remember to Turn and Ch1 at the beginning of each row

← Row 1 [RS]:	31
→ Row 2 [WS]:	31
← Row 3 [RS]:	31
→ Row 4 [WS]:	10 11 10
← Row 5 [RS]:	8 16 7
→ Row 6 [WS]:	7 18 6
← Row 7 [RS]:	6 19 6
→ Row 8 [WS]:	6 19 6
← Row 9 [RS]:	6 19 6
→ Row 10 [WS]:	6 19 6
← Row 11 [RS]:	6 19 6
→ Row 12 [WS]:	7 17 7
← Row 13 [RS]:	7 16 8
→ Row 14 [WS]:	8 15 8
← Row 15 [RS]:	8 15 8
→ Row 16 [WS]:	8 14 9
← Row 17 [RS]:	9 13 9
→ Row 18 [WS]:	9 13 9
← Row 19 [RS]:	9 13 9
→ Row 20 [WS]:	7 16 8
← Row 21 [RS]:	7 6 1 3 1 7 6
→ Row 22 [WS]:	6 7 2 1 2 7 6
← Row 23 [RS]:	6 7 6 6 6
→ Row 24 [WS]:	5 7 6 7 6
← Row 25 [RS]:	6 7 6 7 5
→ Row 26 [WS]:	5 7 6 7 6
← Row 27 [RS]:	5 8 6 7 5
→ Row 28 [WS]:	5 7 6 8 5
← Row 29 [RS]:	5 8 6 7 5
→ Row 30 [WS]:	5 7 7 7 5



← Row 31 [RS]: 5 7 8 7 4

→ Row 32 [WS]: 4 7 8 7 5

← Row 33 [RS]: 5 7 8 7 4

→ Row 34 [WS]: 4 7 9 6 5

← Row 35 [RS]: 5 6 9 7 4

→ Row 36 [WS]: 5 5 11 5 5

← Row 37 [RS]: 6 2 23

→ Row 38 [WS]: 31

← Row 39 [RS]: 31